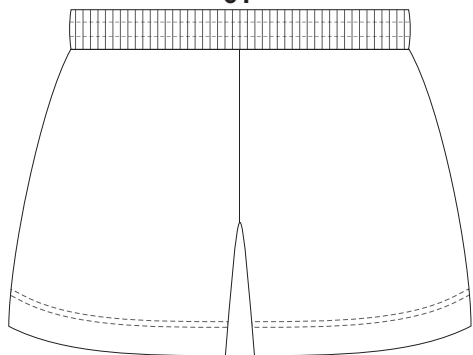
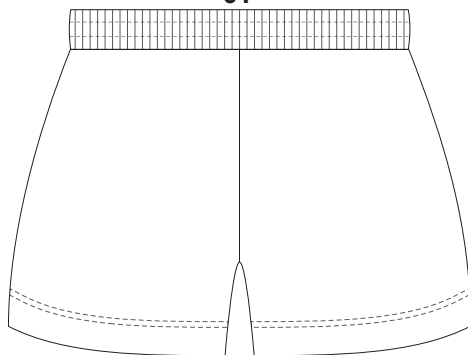


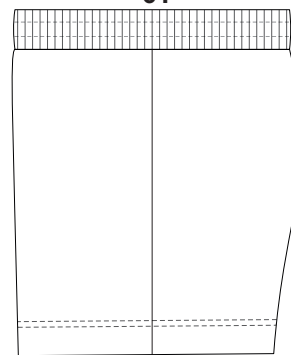
15% of Actual Size  
Sublimation  
**FRONT**  
6Y



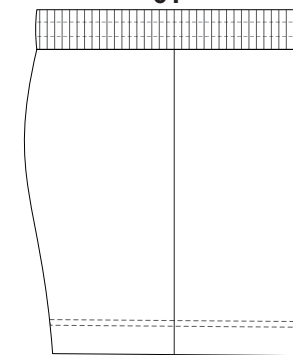
15% of Actual Size  
Sublimation  
**BACK**  
6Y



15% of Actual Size  
Sublimation  
**SIDE 1**  
6Y



15% of Actual Size  
Sublimation  
**SIDE 2**  
6Y



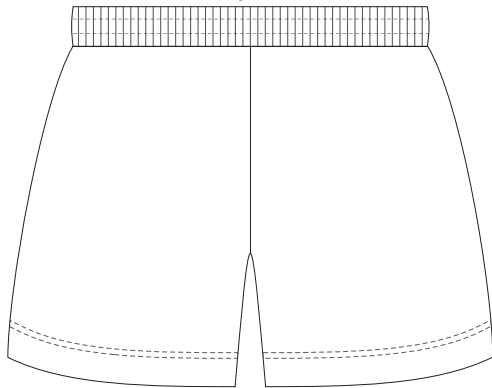
## BRANDING SPECIFICATIONS - Custom Youth Active Shorts - 133407

The garments comes with a mandatory size label and care label.

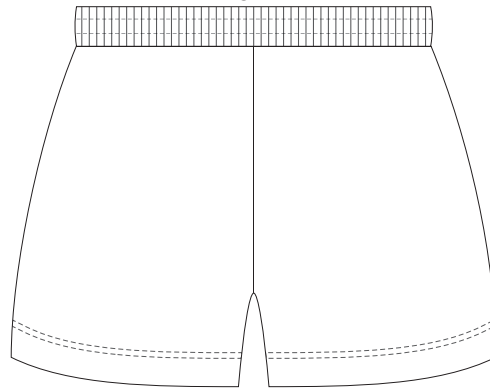
Shorts with an elastic waistband and drawstring.

Close match pantone colours. Metallic, neon or pastel colours are not available.

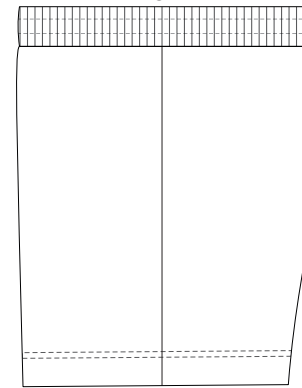
15% of Actual Size  
Sublimation  
**FRONT**  
8Y



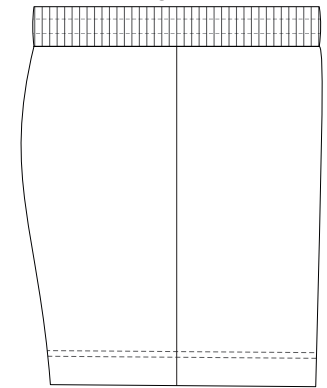
15% of Actual Size  
Sublimation  
**BACK**  
8Y



15% of Actual Size  
Sublimation  
**SIDE 1**  
8Y



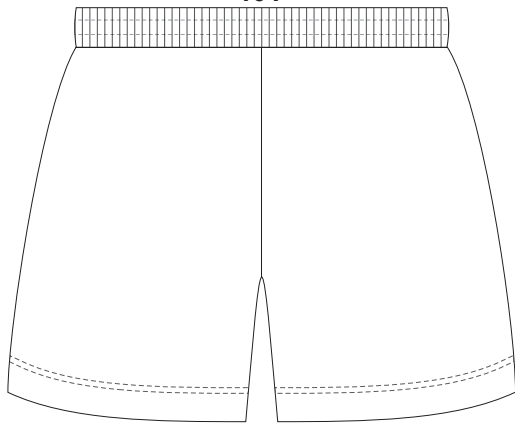
15% of Actual Size  
Sublimation  
**SIDE 2**  
8Y



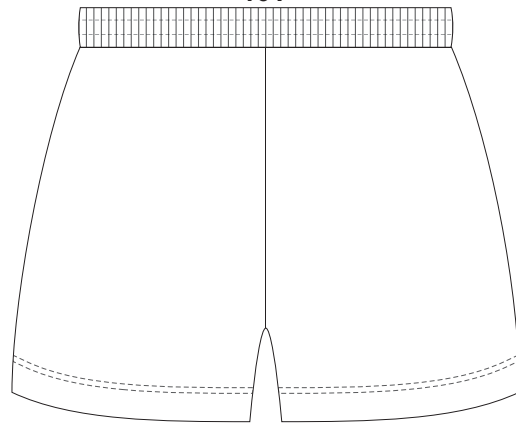
## **BRANDING SPECIFICATIONS - Custom Youth Active Shorts - 133407**

The garments comes with a mandatory size label and care label.  
Shorts with an elastic waistband and drawstring.  
Close match pantone colours. Metallic, neon or pastel colours are not available.

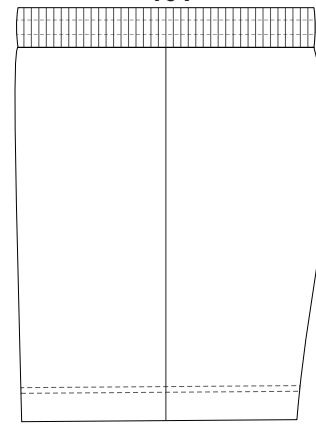
15% of Actual Size  
Sublimation  
**FRONT**  
**10Y**



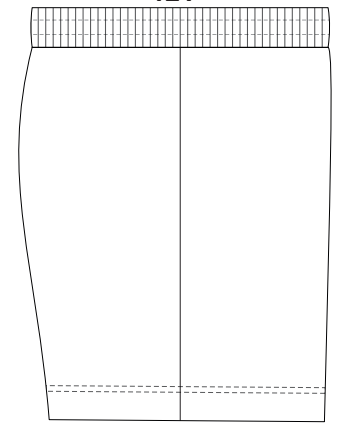
15% of Actual Size  
Sublimation  
**BACK**  
**10Y**



15% of Actual Size  
Sublimation  
**SIDE 1**  
**10Y**



15% of Actual Size  
Sublimation  
**SIDE 2**  
**12Y**



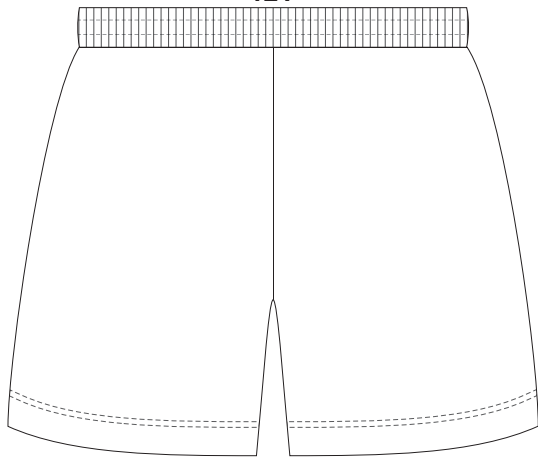
## **BRANDING SPECIFICATIONS - Custom Youth Active Shorts - 133407**

The garments comes with a mandatory size label and care label.

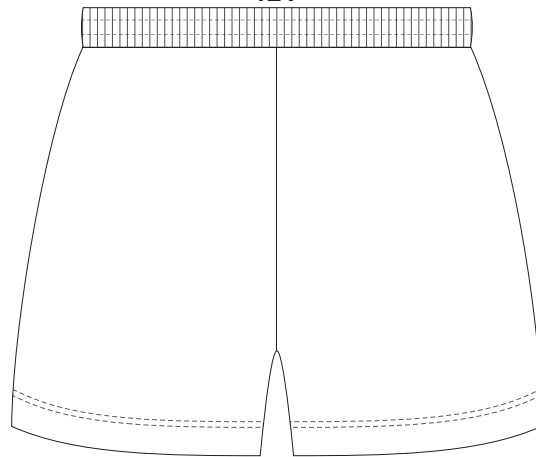
Shorts with an elastic waistband and drawstring.

Close match pantone colours. Metallic, neon or pastel colours are not available.

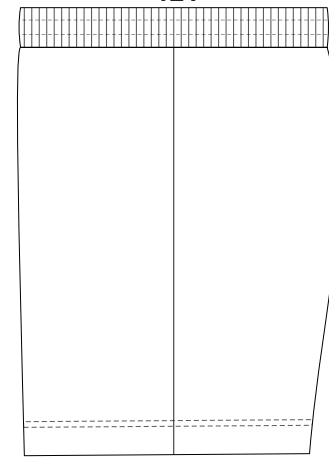
15% of Actual Size  
Sublimation  
**FRONT**  
**12Y**



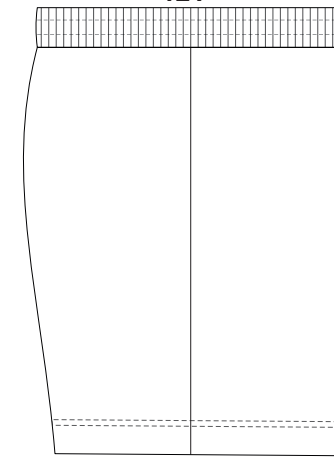
15% of Actual Size  
Sublimation  
**BACK**  
**12Y**



15% of Actual Size  
Sublimation  
**SIDE 1**  
**12Y**



15% of Actual Size  
Sublimation  
**SIDE 2**  
**12Y**



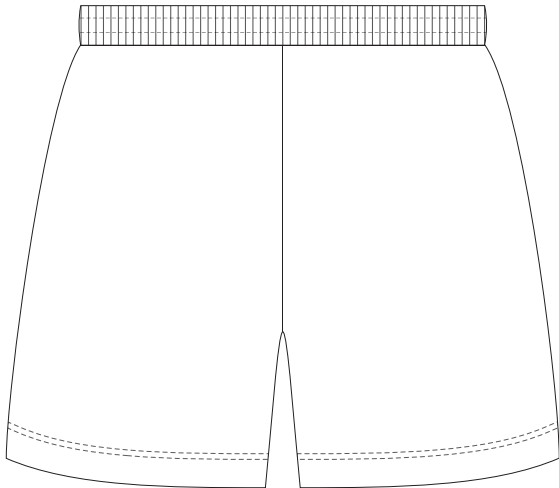
## **BRANDING SPECIFICATIONS - Custom Youth Active Shorts - 133407**

The garments comes with a mandatory size label and care label.

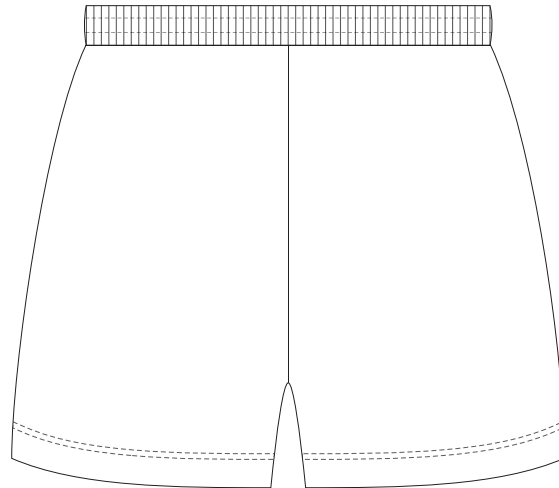
Shorts with an elastic waistband and drawstring.

Close match pantone colours. Metallic, neon or pastel colours are not available.

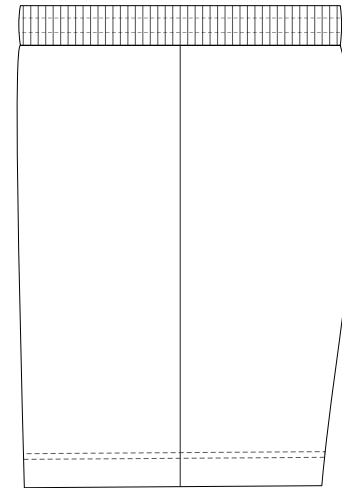
15% of Actual Size  
Sublimation  
**FRONT**  
**14Y**



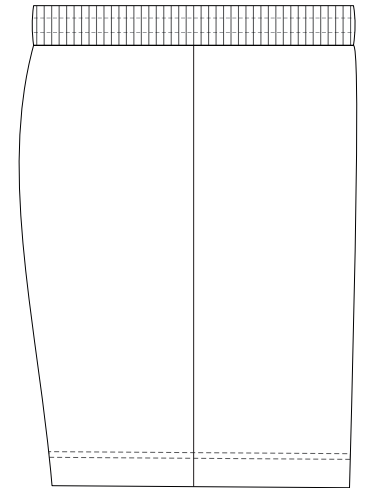
15% of Actual Size  
Sublimation  
**BACK**  
**14Y**



15% of Actual Size  
Sublimation  
**SIDE 1**  
**14Y**



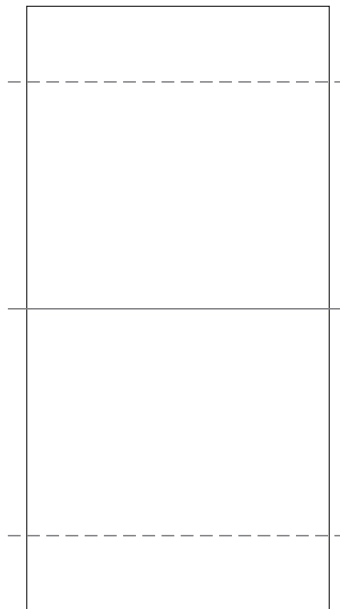
15% of Actual Size  
Sublimation  
**SIDE 2**  
**14Y**



## BRANDING SPECIFICATIONS - Custom Youth Active Shorts - 133407

The garments comes with a mandatory size label and care label.  
Shorts with an elastic waistband and drawstring.  
Close match pantone colours. Metallic, neon or pastel colours are not available.

100% of Actual Size  
Sublimation custom tag



Dotted line = Stitch line

## BRANDING SPECIFICATIONS - Custom Youth Active Shorts - 133407

---

Default is to have no tag, please confirm in your order if you require a custom tag (*free of charge*).

Material is 100% polyester satin.

Printing via sublimation, due to the nature of sublimation, artwork particularly fine detail/text may experience minor colour bleed across adjacent design elements.

Metallic, neon or pastel colours are not available.