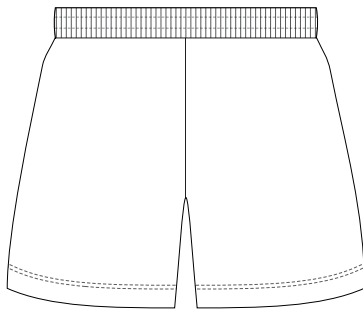
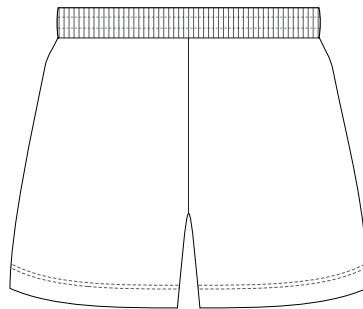


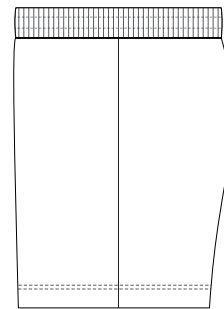
10% of Actual Size
Sublimation
FRONT
XS



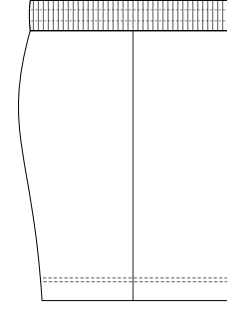
10% of Actual Size
Sublimation
BACK
XS



10% of Actual Size
Sublimation
SIDE 1
XS



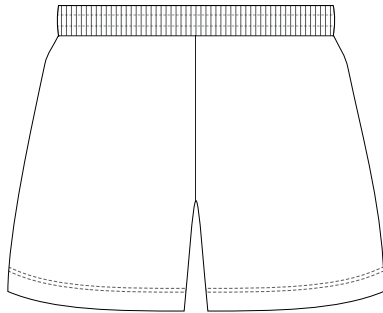
10% of Actual Size
Sublimation
SIDE 2
XS



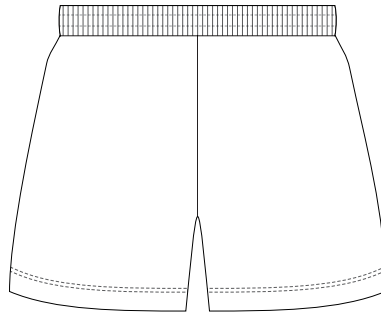
BRANDING SPECIFICATIONS - Custom Womens Active Shorts - 133406

The garments comes with a mandatory size label and care label.
Shorts with an elastic waistband and drawstring.
Close match pantone colours. Metallic, neon or pastel colours are not available.

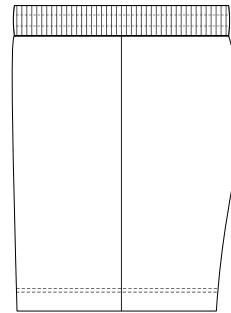
10% of Actual Size
Sublimation
**FRONT
SMALL**



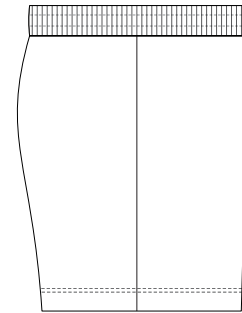
10% of Actual Size
Sublimation
**BACK
SMALL**



10% of Actual Size
Sublimation
**SIDE 1
SMALL**



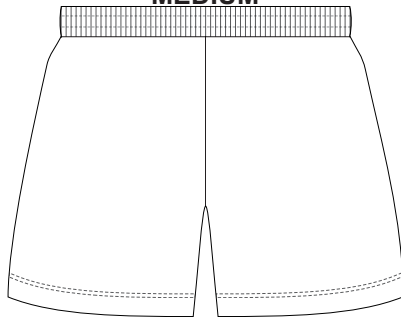
10% of Actual Size
Sublimation
**SIDE 2
SMALL**



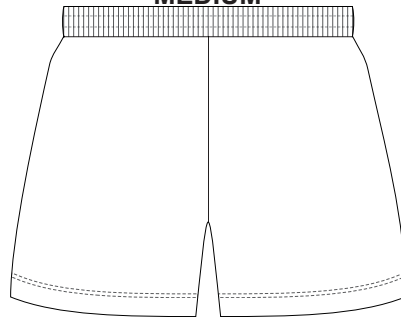
BRANDING SPECIFICATIONS - Custom Womens Active Shorts - 133406

The garments comes with a mandatory size label and care label.
Shorts with an elastic waistband and drawstring.
Close match pantone colours. Metallic, neon or pastel colours are not available.

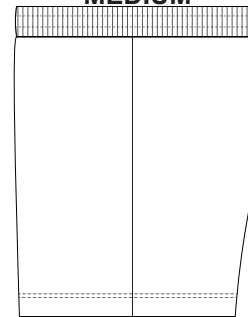
10% of Actual Size
Sublimation
FRONT
MEDIUM



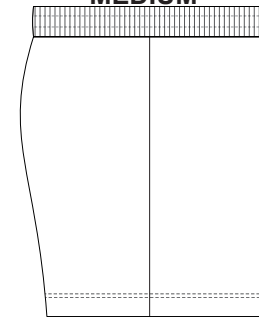
10% of Actual Size
Sublimation
BACK
MEDIUM



10% of Actual Size
Sublimation
SIDE 1
MEDIUM

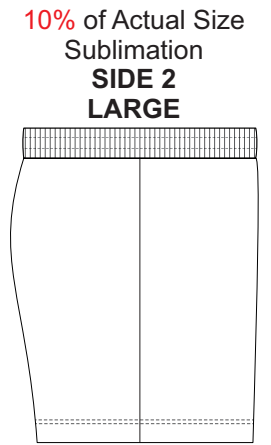
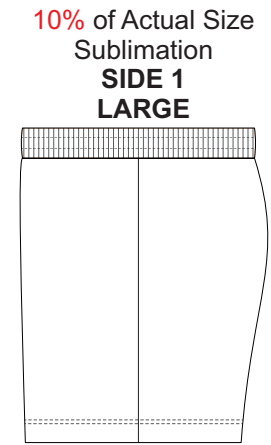
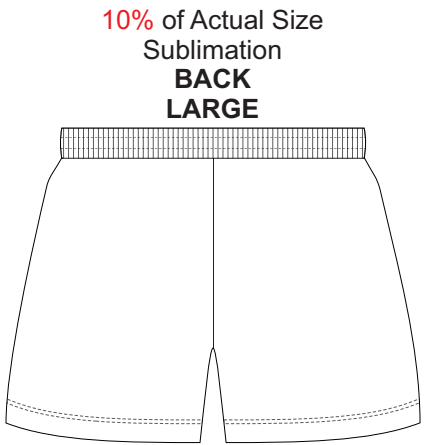
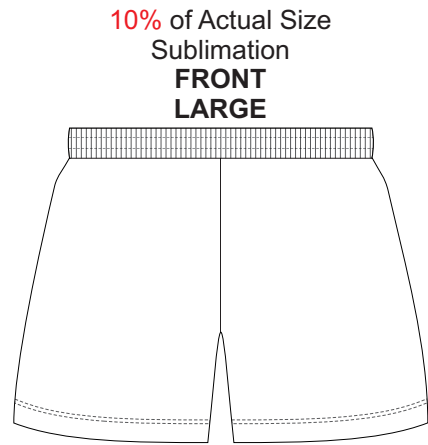


10% of Actual Size
Sublimation
SIDE 2
MEDIUM



BRANDING SPECIFICATIONS - Custom Womens Active Shorts - 133406

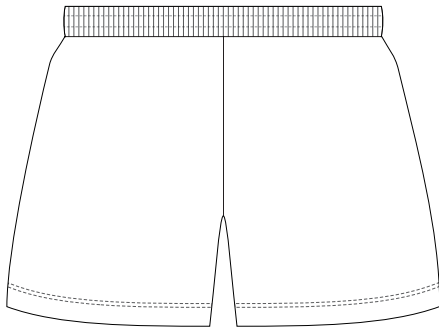
The garments comes with a mandatory size label and care label.
Shorts with an elastic waistband and drawstring.
Close match pantone colours. Metallic, neon or pastel colours are not available.



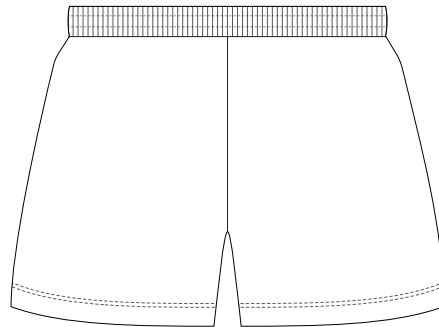
BRANDING SPECIFICATIONS - Custom Womens Active Shorts - 133406

The garments comes with a mandatory size label and care label.
Shorts with an elastic waistband and drawstring.
Close match pantone colours. Metallic, neon or pastel colours are not available.

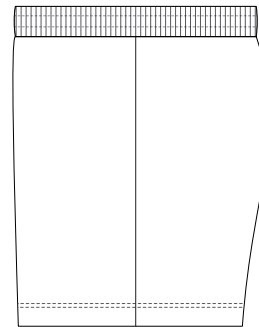
10% of Actual Size
Sublimation
FRONT
XL



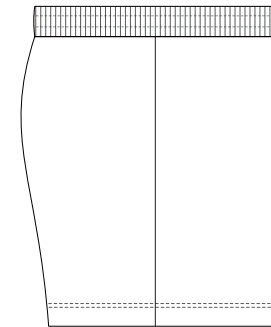
10% of Actual Size
Sublimation
BACK
XL



10% of Actual Size
Sublimation
SIDE 1
XL



10% of Actual Size
Sublimation
SIDE 2
XL



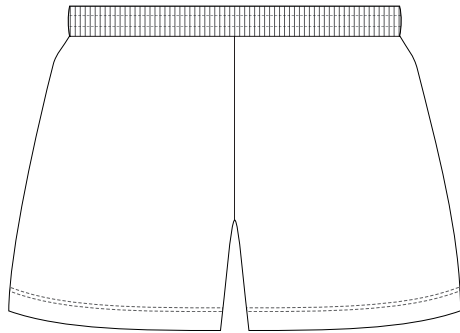
BRANDING SPECIFICATIONS - Custom Womens Active Shorts - 133406

The garments comes with a mandatory size label and care label.

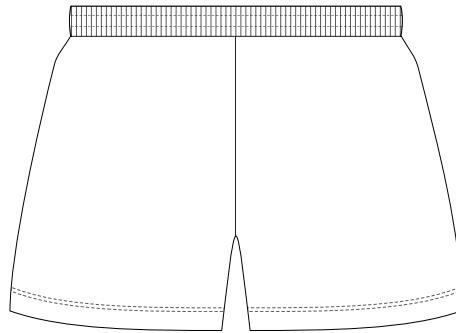
Shorts with an elastic waistband and drawstring.

Close match pantone colours. Metallic, neon or pastel colours are not available.

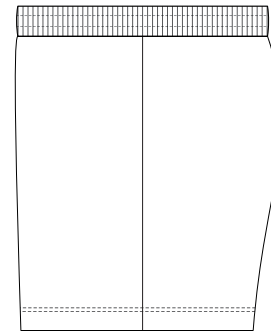
10% of Actual Size
Sublimation
FRONT
2XL



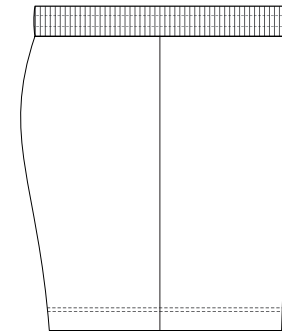
10% of Actual Size
Sublimation
BACK
2XL



10% of Actual Size
Sublimation
SIDE 1
2XL



10% of Actual Size
Sublimation
SIDE 2
2XL

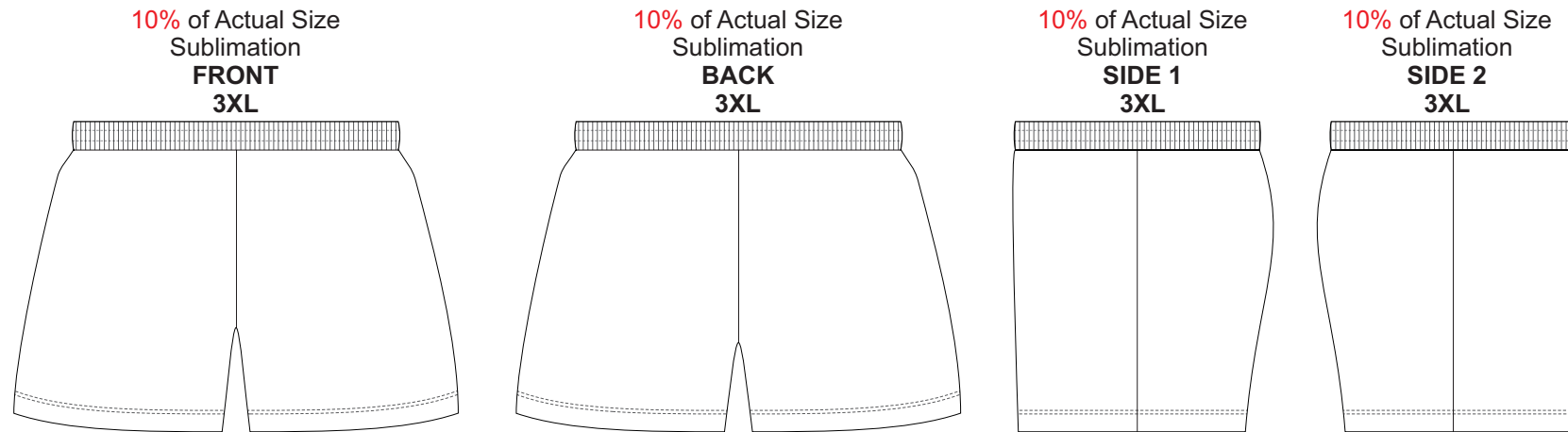


BRANDING SPECIFICATIONS - Custom Womens Active Shorts - 133406

The garments comes with a mandatory size label and care label.

Shorts with an elastic waistband and drawstring.

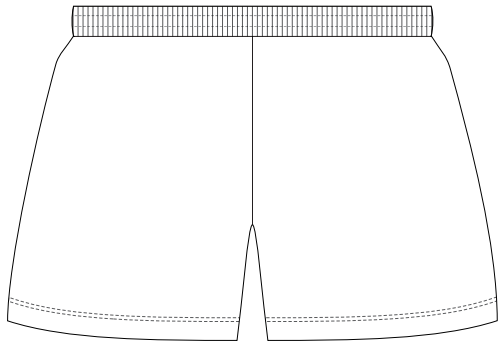
Close match pantone colours. Metallic, neon or pastel colours are not available.



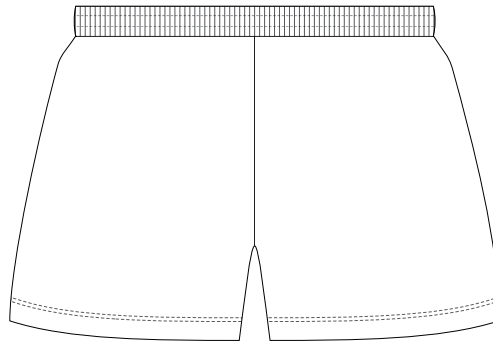
BRANDING SPECIFICATIONS - Custom Womens Active Shorts - 133406

The garments comes with a mandatory size label and care label.
Shorts with an elastic waistband and drawstring.
Close match pantone colours. Metallic, neon or pastel colours are not available.

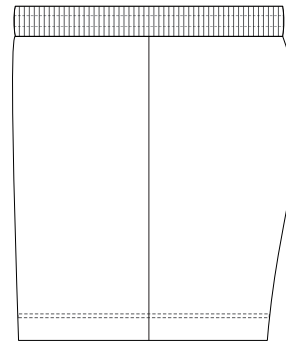
10% of Actual Size
Sublimation
FRONT
4XL



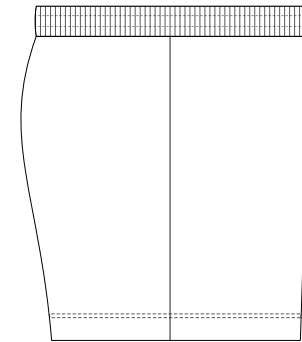
10% of Actual Size
Sublimation
BACK
4XL



10% of Actual Size
Sublimation
SIDE 1
4XL



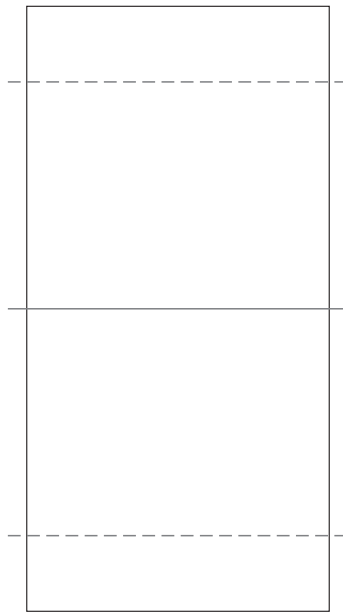
10% of Actual Size
Sublimation
SIDE 2
4XL



BRANDING SPECIFICATIONS - Custom Womens Active Shorts - 133406

The garments comes with a mandatory size label and care label.
Shorts with an elastic waistband and drawstring.
Close match pantone colours. Metallic, neon or pastel colours are not available.

100% of Actual Size
Sublimation custom tag



Dotted line = Stitch line

BRANDING SPECIFICATIONS - Custom Womens Active Shorts - 133406

Default is to have no tag, please confirm in your order if you require a custom tag (*free of charge*).

Material is 100% polyester satin.

Printing via sublimation, due to the nature of sublimation, artwork particularly fine detail/text may experience minor colour bleed across adjacent design elements.

Metallic, neon or pastel colours are not available.