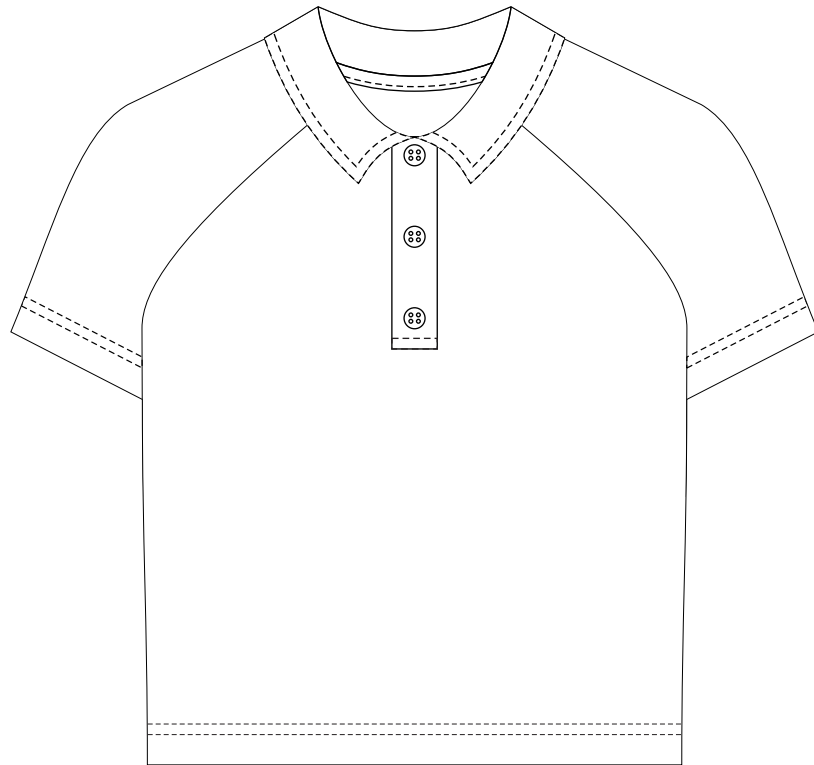
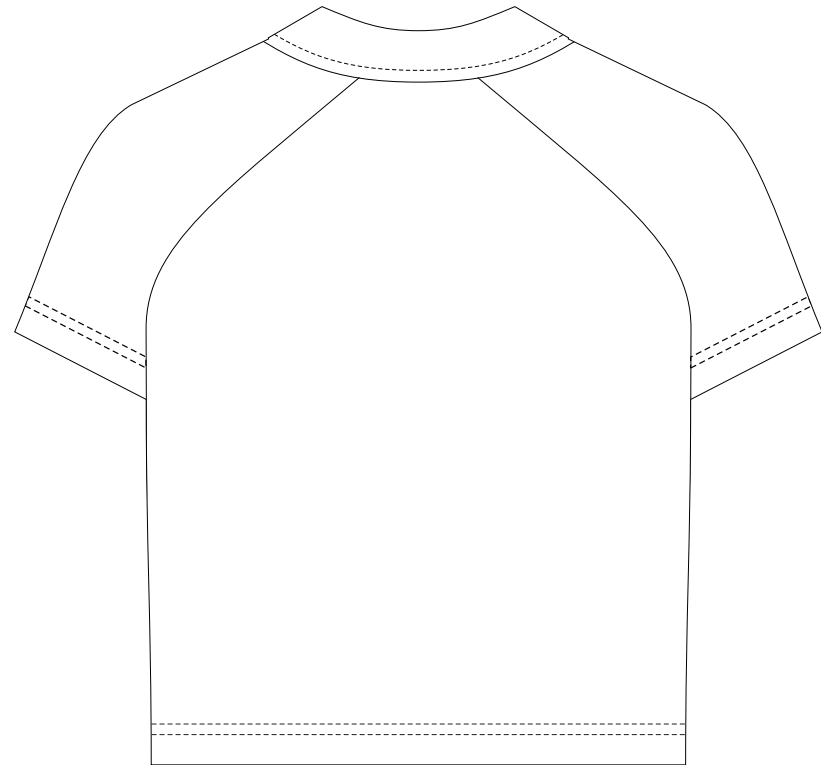


20% of Actual Size
Sublimation
FRONT
6Y



20% of Actual Size
Sublimation
BACK
6Y



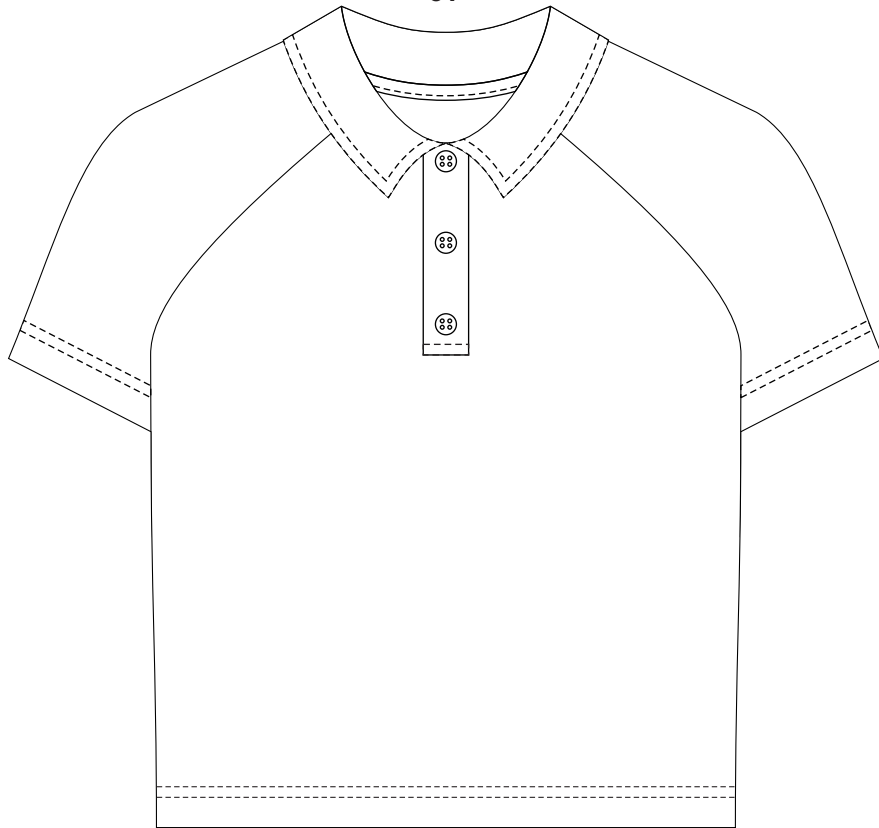
BRANDING SPECIFICATIONS - Custom Youth Active Polo - 133401

The garments come with a mandatory size label and care label.

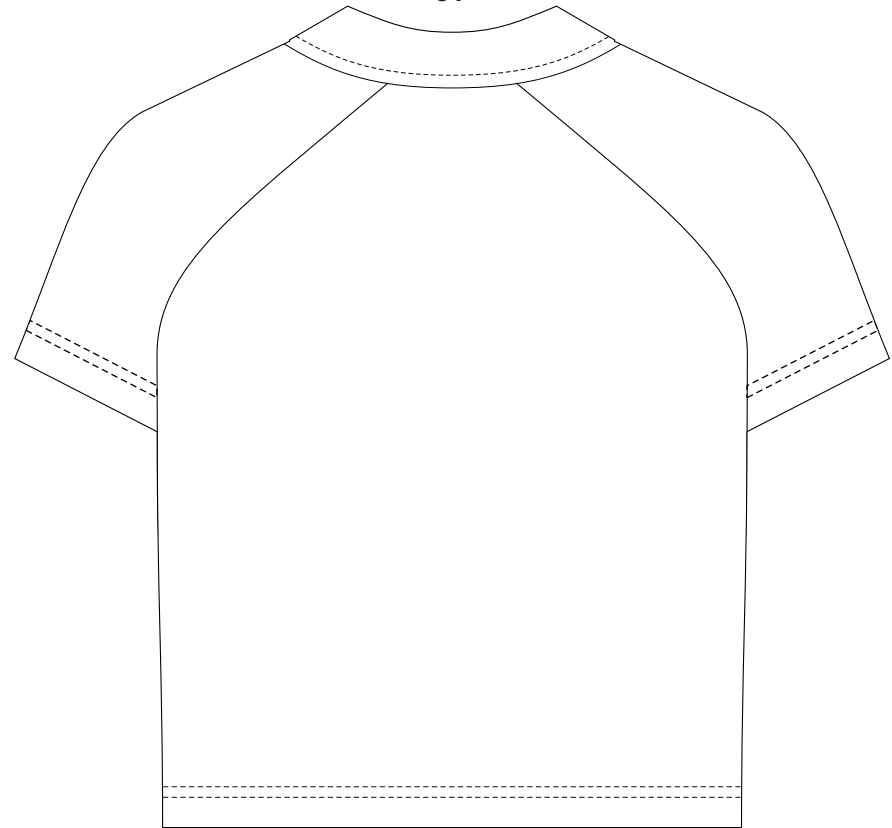
Button colours are solid clear, white or black.

Close match pantone colours. Metallic, neon or pastel colours are not available.

20% of Actual Size
Sublimation
FRONT
8Y



20% of Actual Size
Sublimation
BACK
8Y



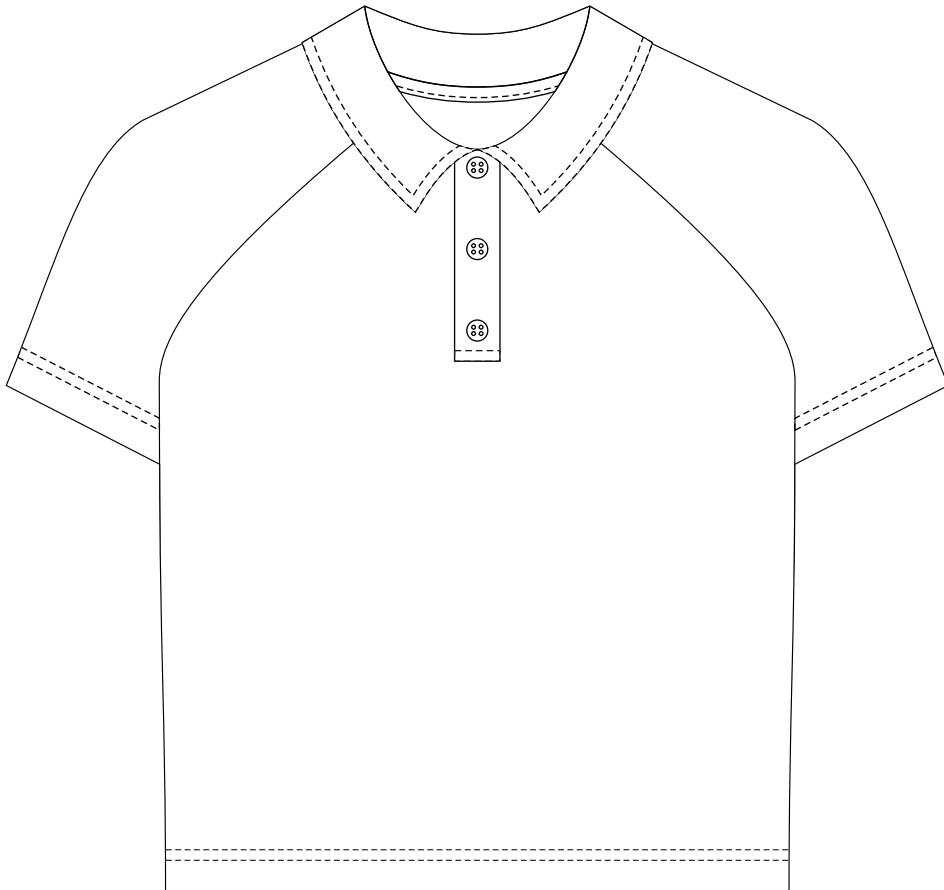
BRANDING SPECIFICATIONS - Custom Youth Active Polo - 133401

The garments come with a mandatory size label and care label.

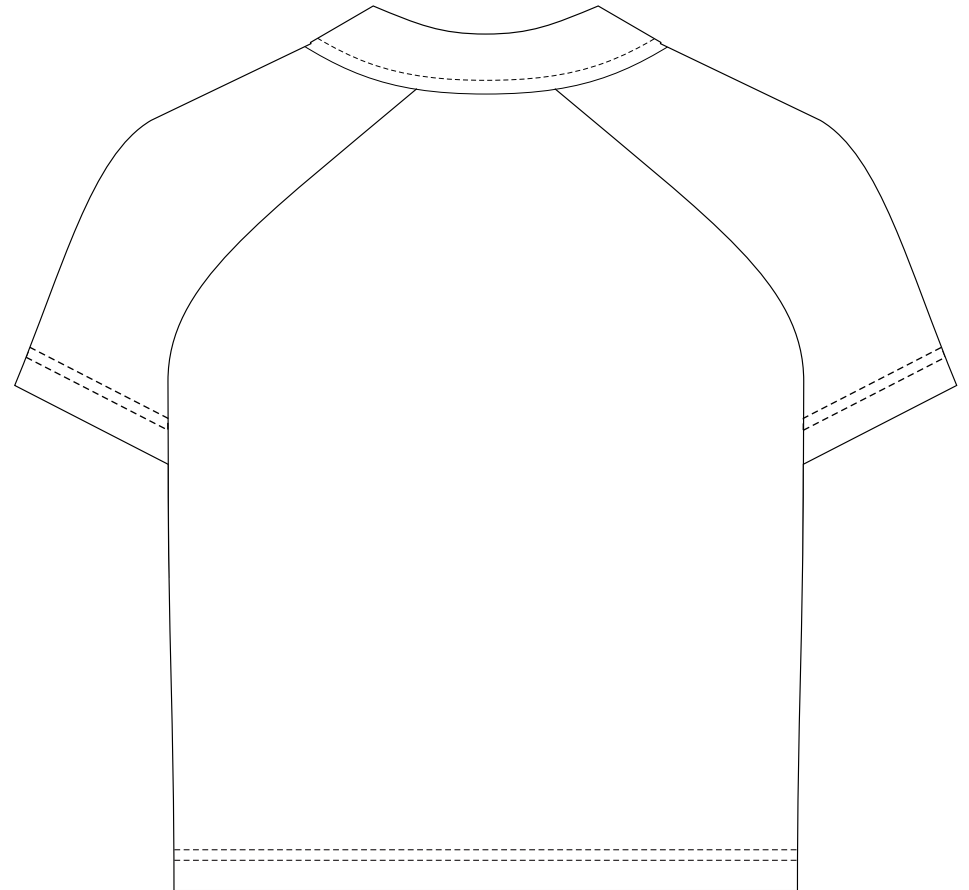
Button colours are solid clear, white or black.

Close match pantone colours. Metallic, neon or pastel colours are not available.

20% of Actual Size
Sublimation
FRONT
10Y



20% of Actual Size
Sublimation
BACK
10Y



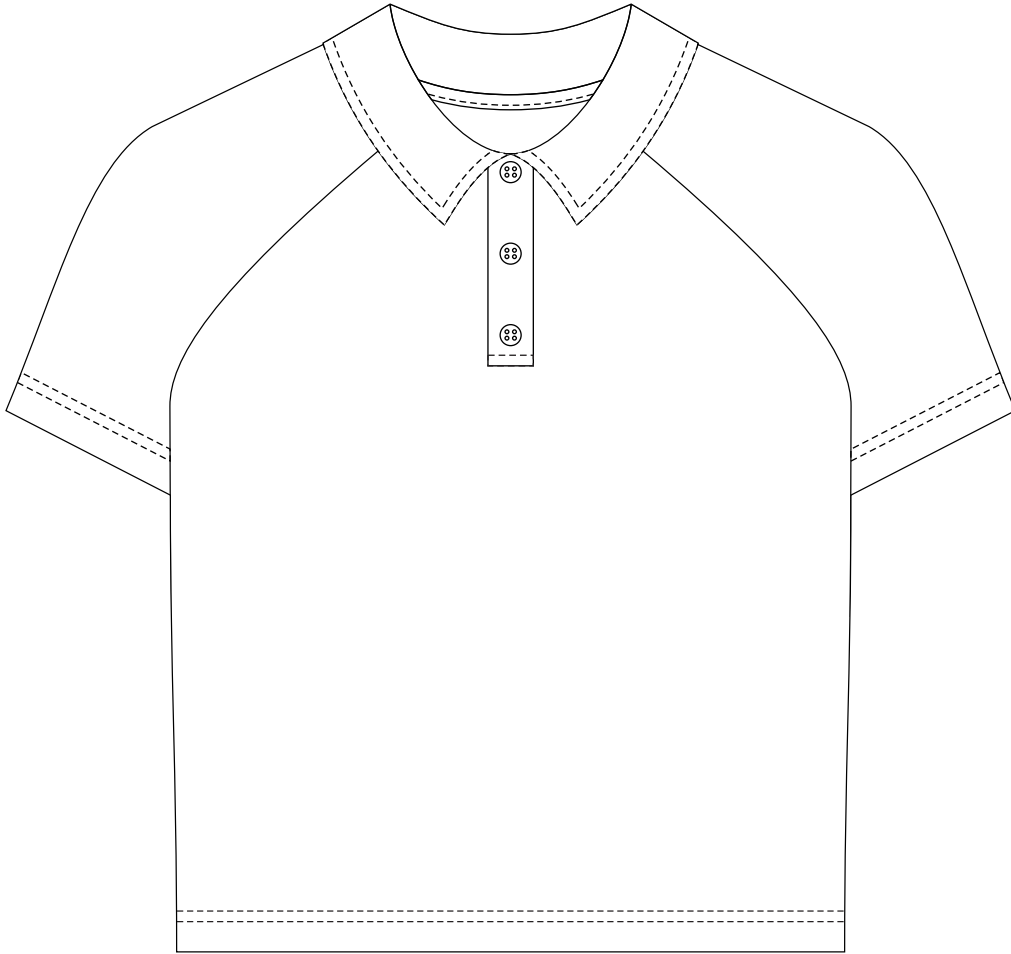
BRANDING SPECIFICATIONS - Custom Youth Active Polo - 133401

The garments come with a mandatory size label and care label.

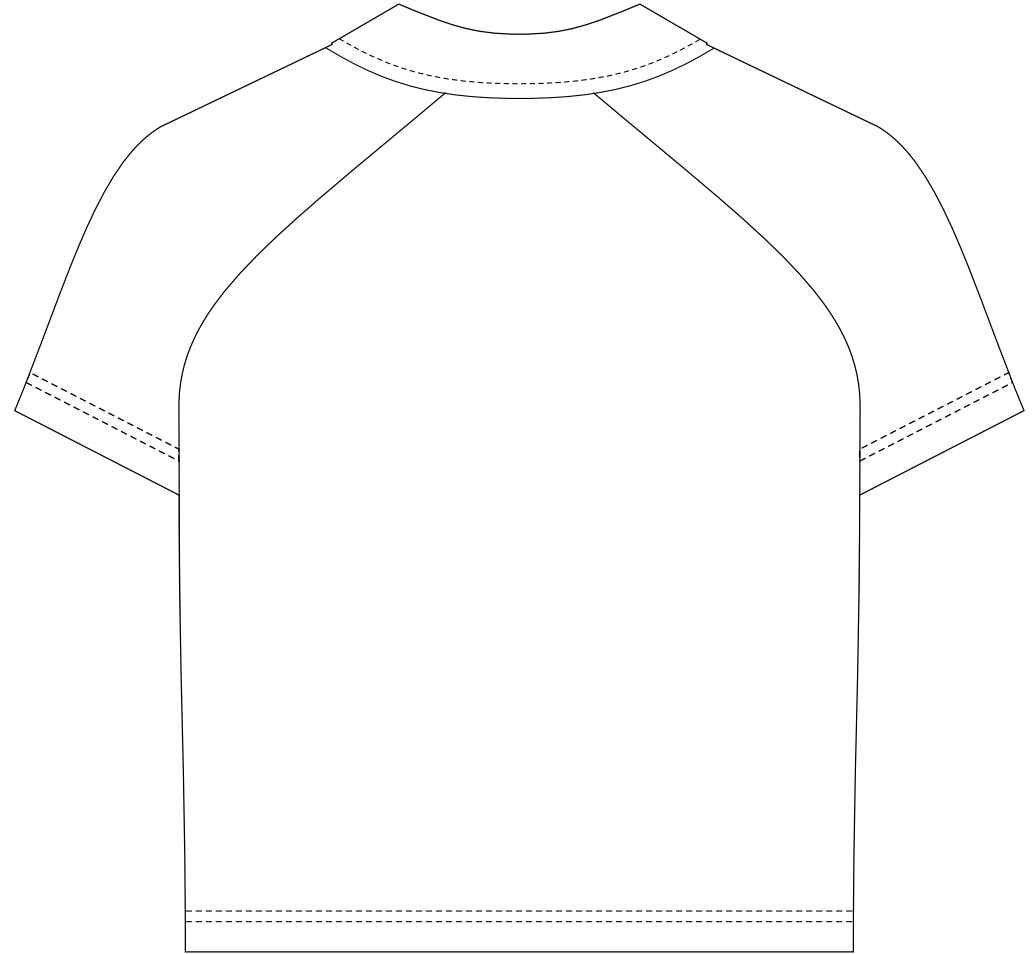
Button colours are solid clear, white or black.

Close match pantone colours. Metallic, neon or pastel colours are not available.

20% of Actual Size
Sublimation
FRONT
12Y



20% of Actual Size
Sublimation
BACK
12Y



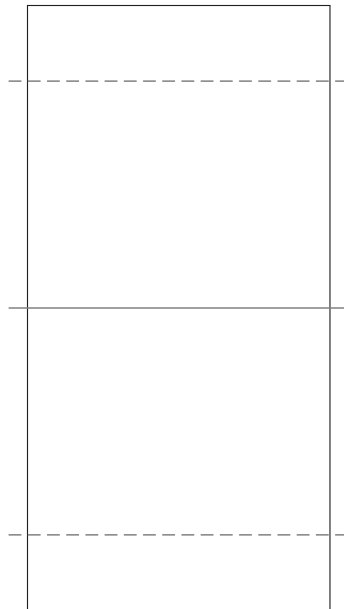
BRANDING SPECIFICATIONS - Custom Youth Active Polo - 133401

The garments come with a mandatory size label and care label.

Button colours are solid clear, white or black.

Close match pantone colours. Metallic, neon or pastel colours are not available.

100% of Actual Size
Sublimation custom tag



Dotted line = Stitch line

BRANDING SPECIFICATIONS - Custom Youth Active Polo - 133401

Default is to have no tag, please confirm in your order if you require a custom tag (*free of charge*).

Material is 100% polyester satin.

Printing via sublimation, due to the nature of sublimation, artwork particularly fine detail/text may experience minor colour bleed across adjacent design elements.

Metallic, neon or pastel colours are not available.