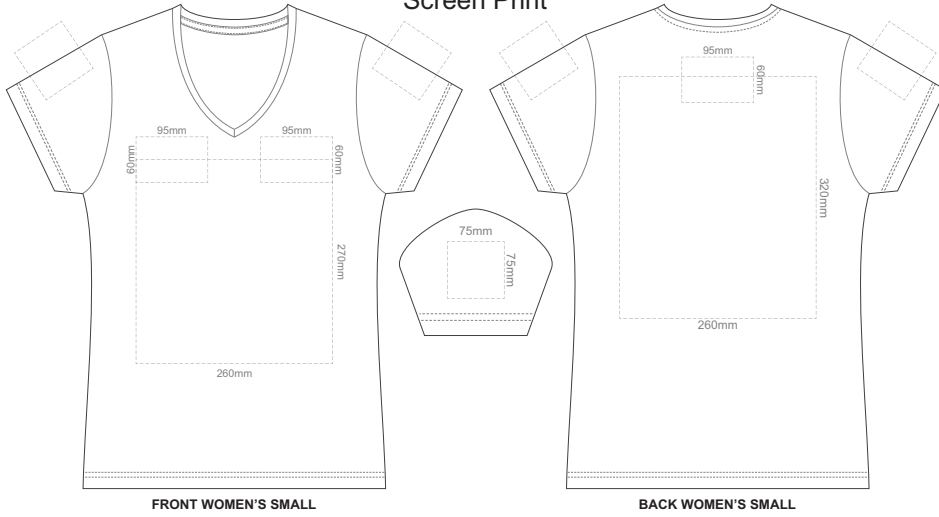
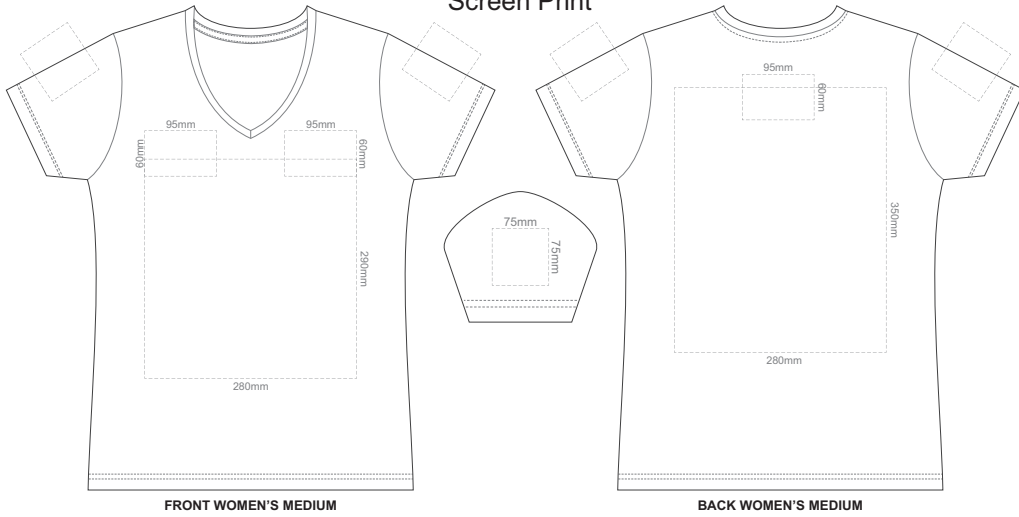


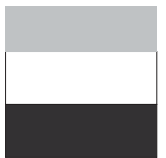
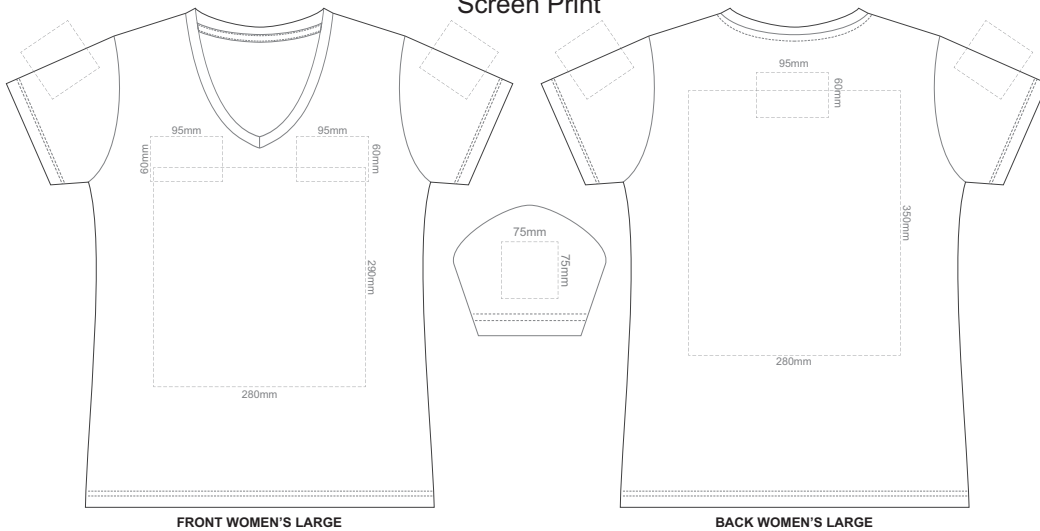
10% of Actual Size
Screen Print



10% of Actual Size
Screen Print

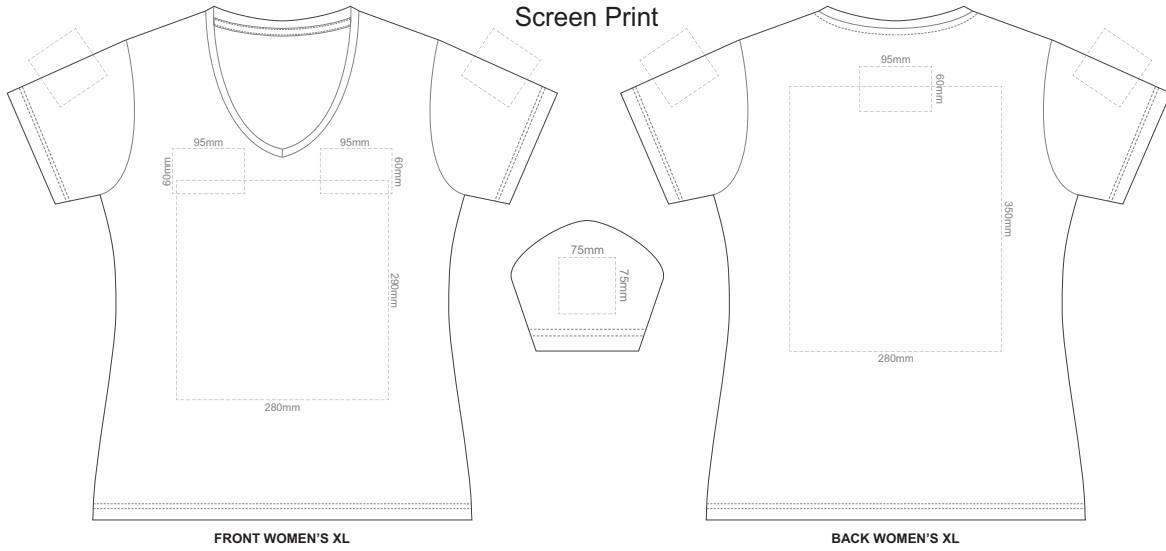


10% of Actual Size
Screen Print

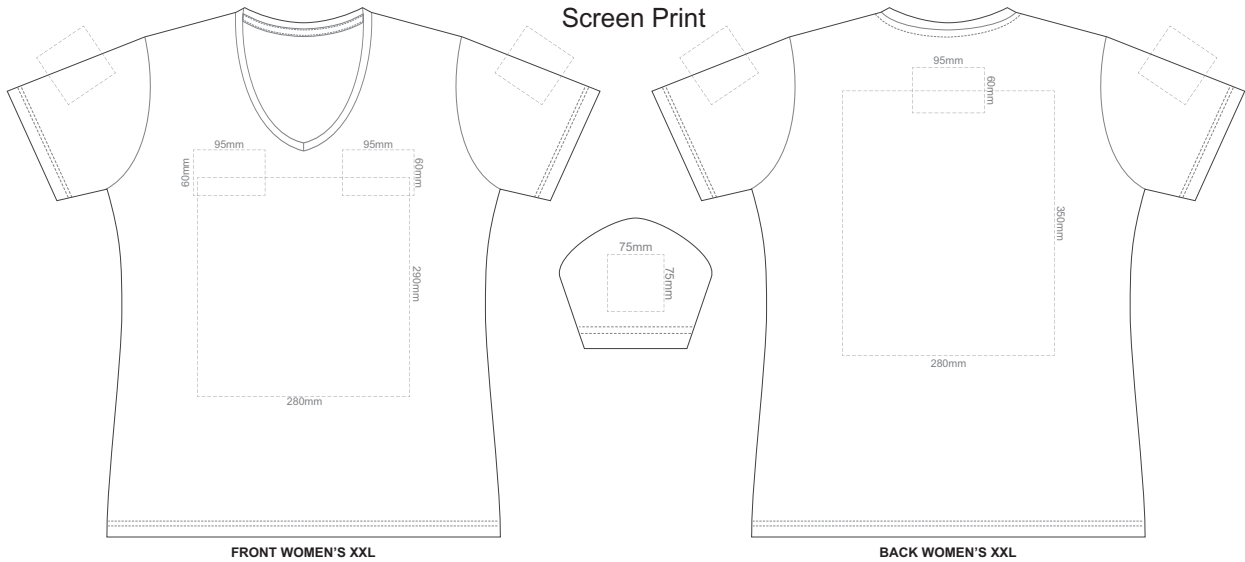




10% of Actual Size
Screen Print



10% of Actual Size
Screen Print



10% of Actual Size
 Colourflex Tranfer
 Faux Embroidery
 DigiFlex Transfer



FRONT WOMEN'S SMALL
 Print area can be rotated to best suit.
 Branding area can be moved anywhere within the red line.

BACK WOMEN'S SMALL
 Print area 210x260mm can be rotated to best suit.
 Branding area can be moved anywhere within the red line.

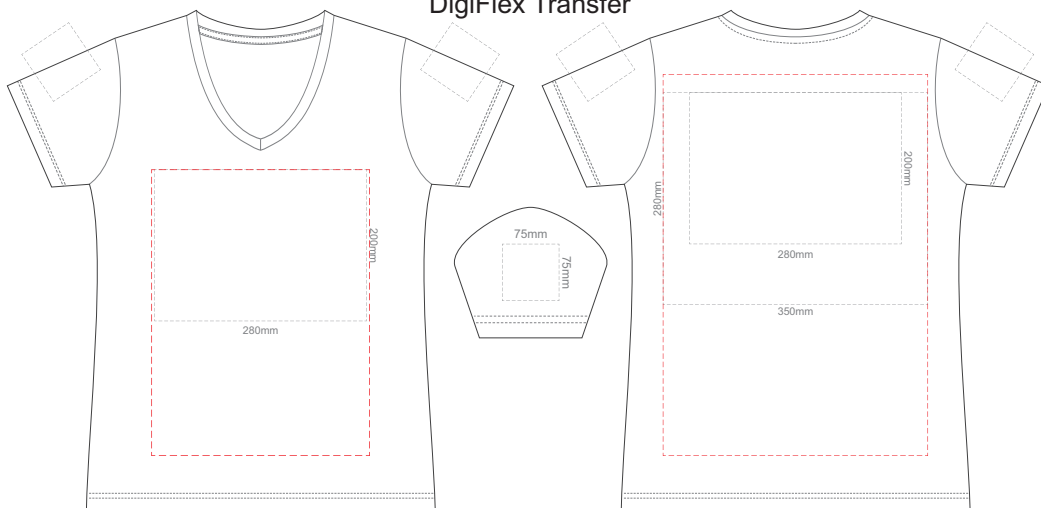
10% of Actual Size
 Colourflex Tranfer
 Faux Embroidery
 DigiFlex Transfer



FRONT WOMEN'S MEDIUM
 Print area can be rotated to best suit.
 Branding area can be moved anywhere within the red line.

BACK WOMEN'S MEDIUM
 Print area 210x260mm can be rotated to best suit.
 Branding area can be moved anywhere within the red line.

10% of Actual Size
 Colourflex Tranfer
 Faux Embroidery
 DigiFlex Transfer

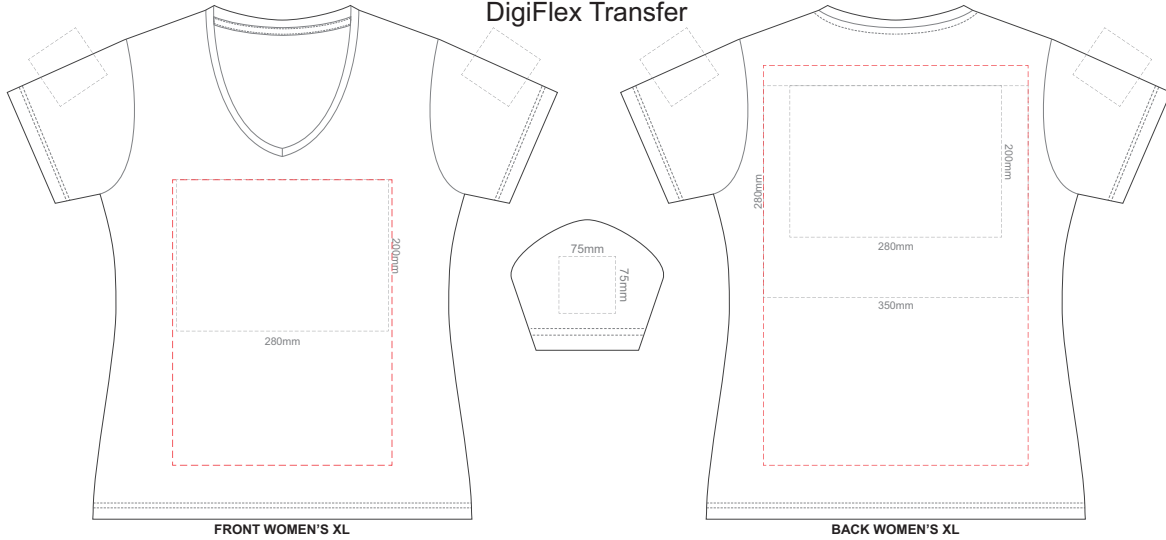


FRONT WOMEN'S LARGE
 Print area can be rotated to best suit.
 Branding area can be moved anywhere within the red line.

BACK WOMEN'S LARGE
 Print area can be rotated to best suit.
 Branding area can be moved anywhere within the red line.



10% of Actual Size
Colourflex Tranfer
Faux Embroidery
DigiFlex Transfer

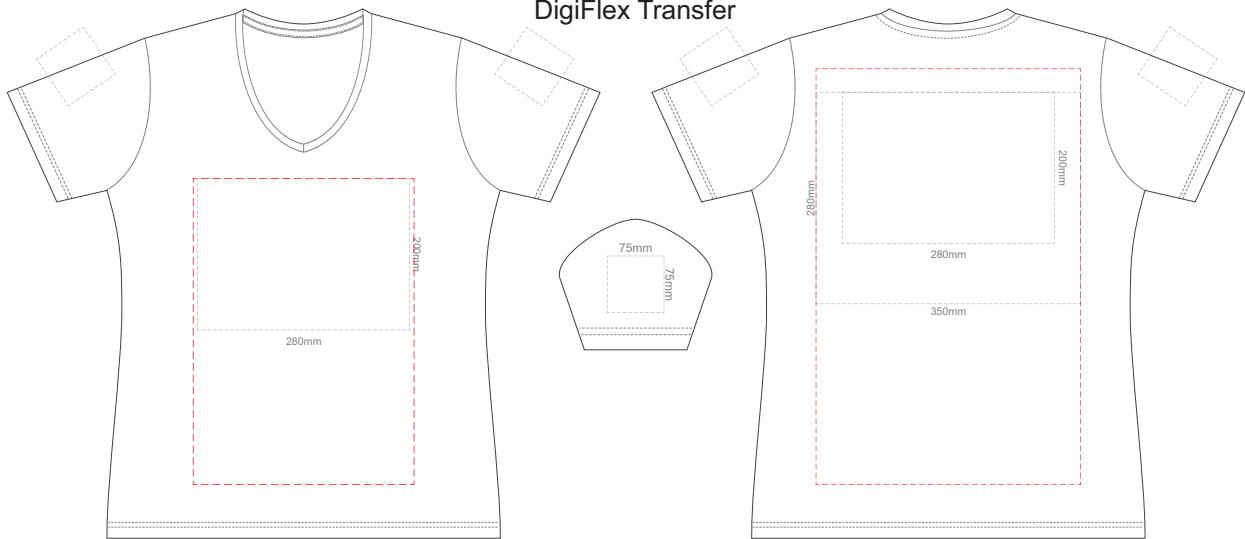


FRONT WOMEN'S XL
Print area can be rotated to best suit.
Branding area can be moved anywhere within the red line.

BACK WOMEN'S XL
Print area can be rotated to best suit.
Branding area can be moved anywhere within the red line.



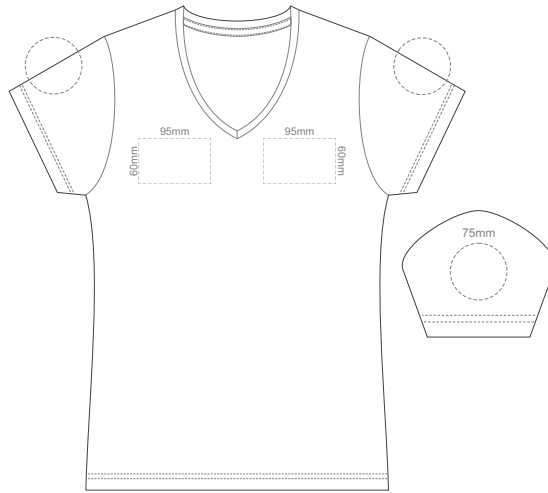
10% of Actual Size
Colourflex Tranfer
Faux Embroidery
DigiFlex Transfer



FRONT WOMEN'S XXL
Print area can be rotated to best suit.
Branding area can be moved anywhere within the red line.

BACK WOMEN'S XXL
Print area can be rotated to best suit.
Branding area can be moved anywhere within the red line.

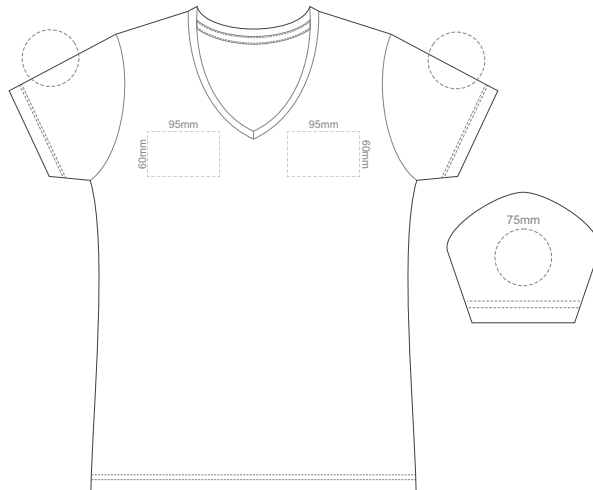
10% of Actual Size
Embroidery



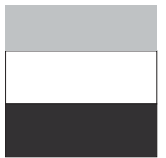
FRONT WOMEN'S SMALL



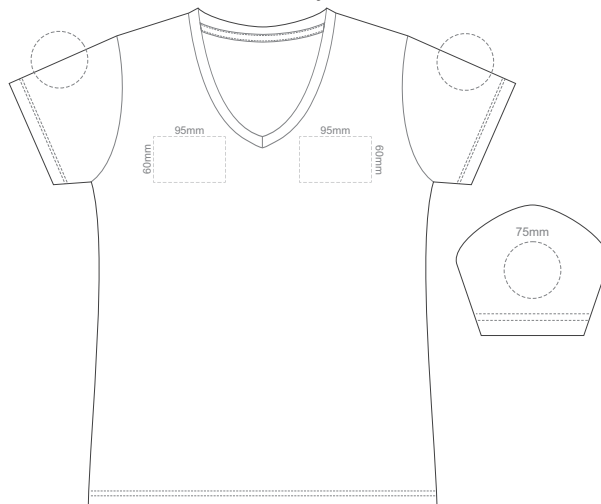
10% of Actual Size
Embroidery



FRONT WOMEN'S MEDIUM



10% of Actual Size
Embroidery

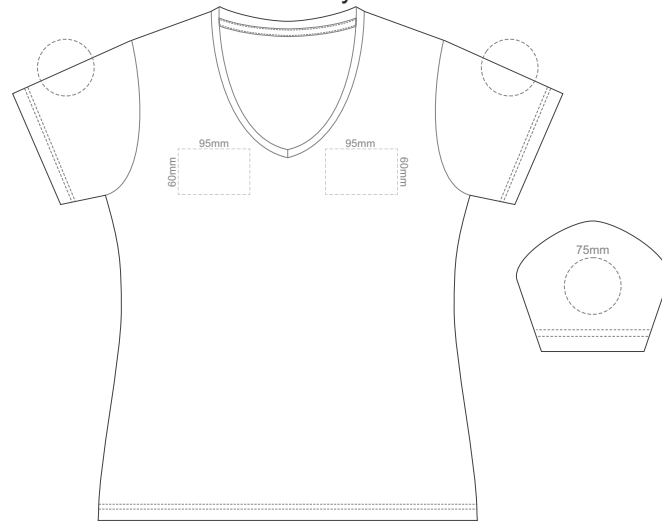


FRONT WOMEN'S LARGE





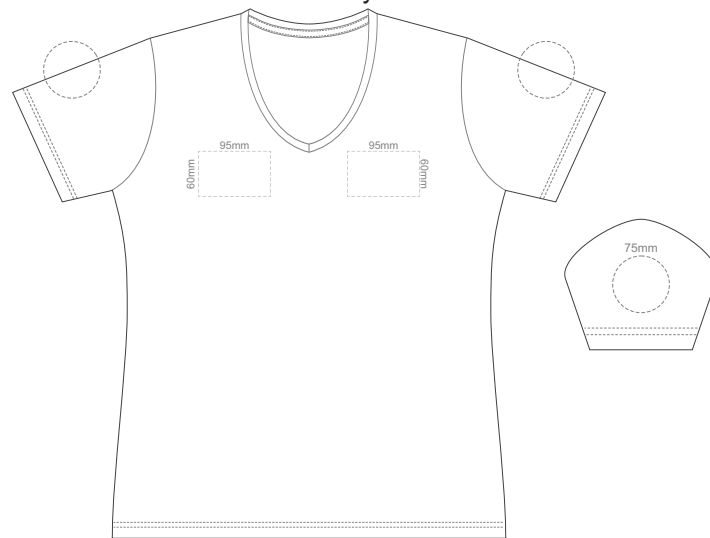
10% of Actual Size
Embroidery



FRONT WOMEN'S XL



10% of Actual Size
Embroidery



FRONT WOMEN'S XXL